

# Termbase instructions

## for assistants/project managers

Studio 2019

### Contents

Getting the termbases.....	1
Using the termbases.....	2
Adding a termbase to a project.....	2

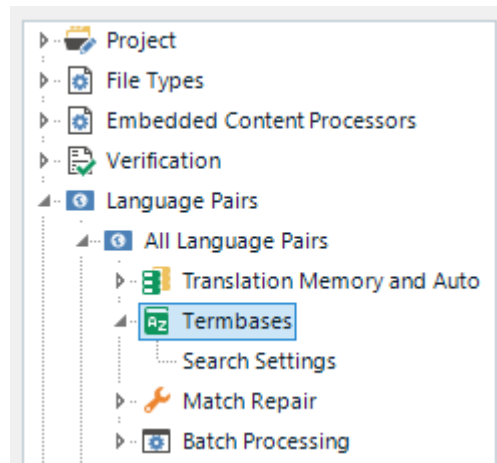
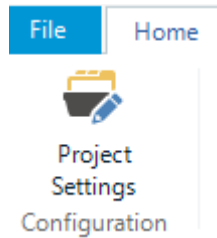
### Getting the termbases

If available in IATE or on any specific EP platform/website, the relevant termbase files can be downloaded and copied to the respective project folder.

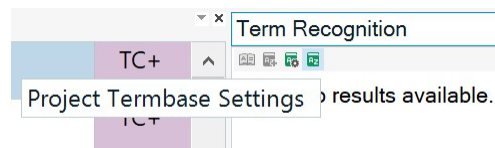
## Using the termbases

### Adding a termbase to a project

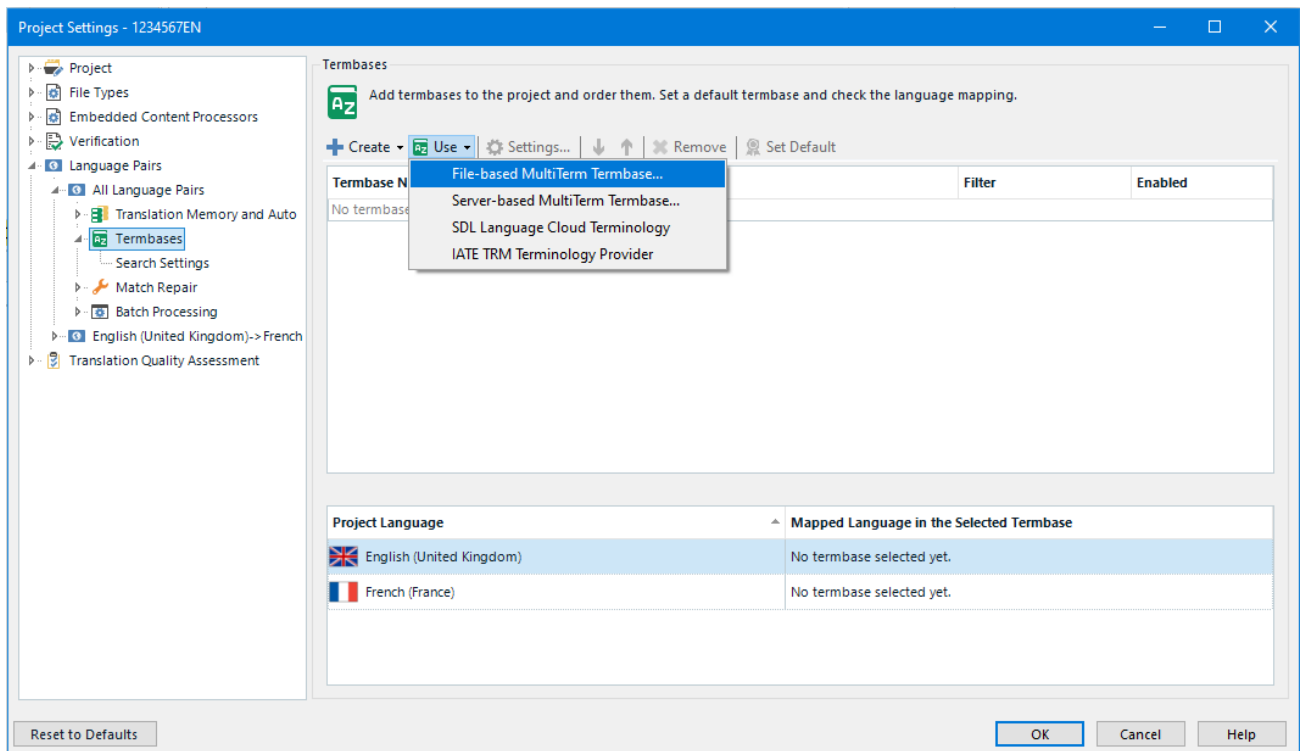
1. In Studio, open the project, then go to **Project Settings** and click on **Termbases** (Language Pairs > All Language Pairs > Termbases).



Alternatively, click the **green icon** on the **Term Recognition window** (the last on the right - Project Termbase Settings) to go straight to the Termbases section.



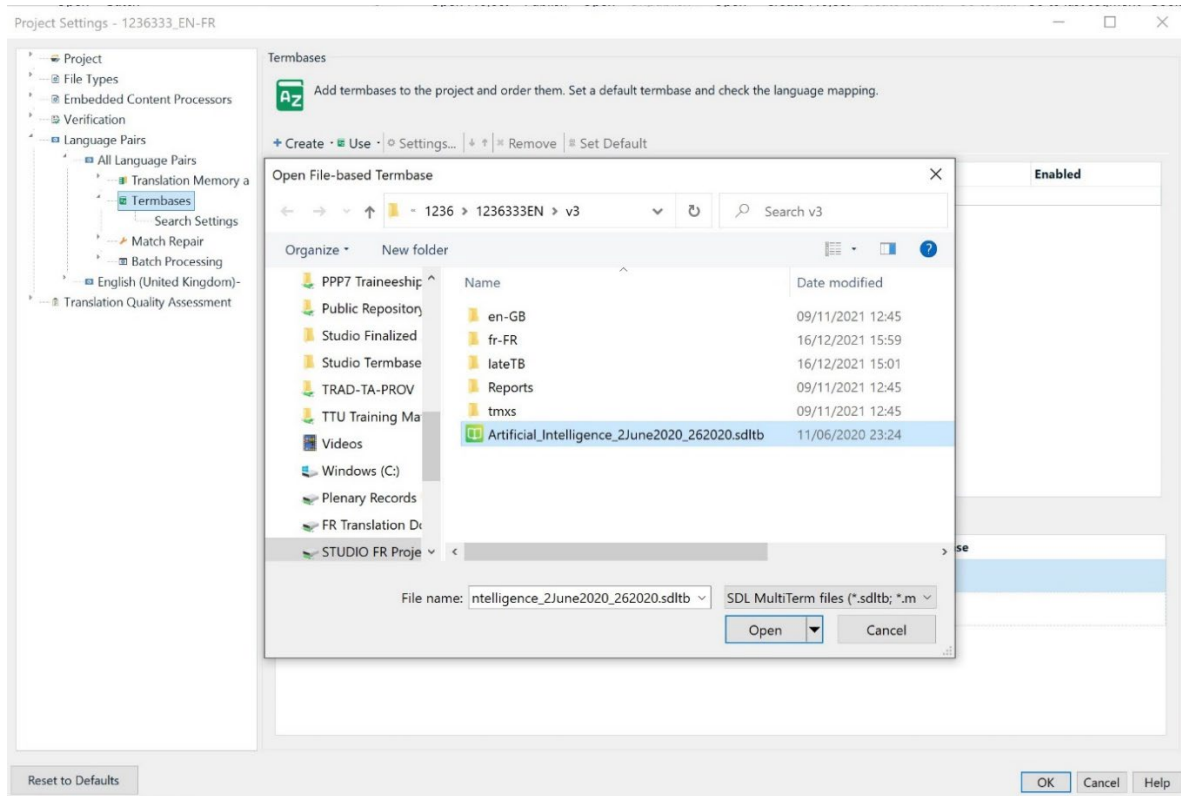
2. Click on **Use > File-based MultiTerm Termbase**



## TERMBASE INSTRUCTIONS

3. Browse to the folder where the **termbase** is saved. Select the termbase and click **Open**.  
(Use > File-based MultiTerm Termbase > Browse > Select + Open)

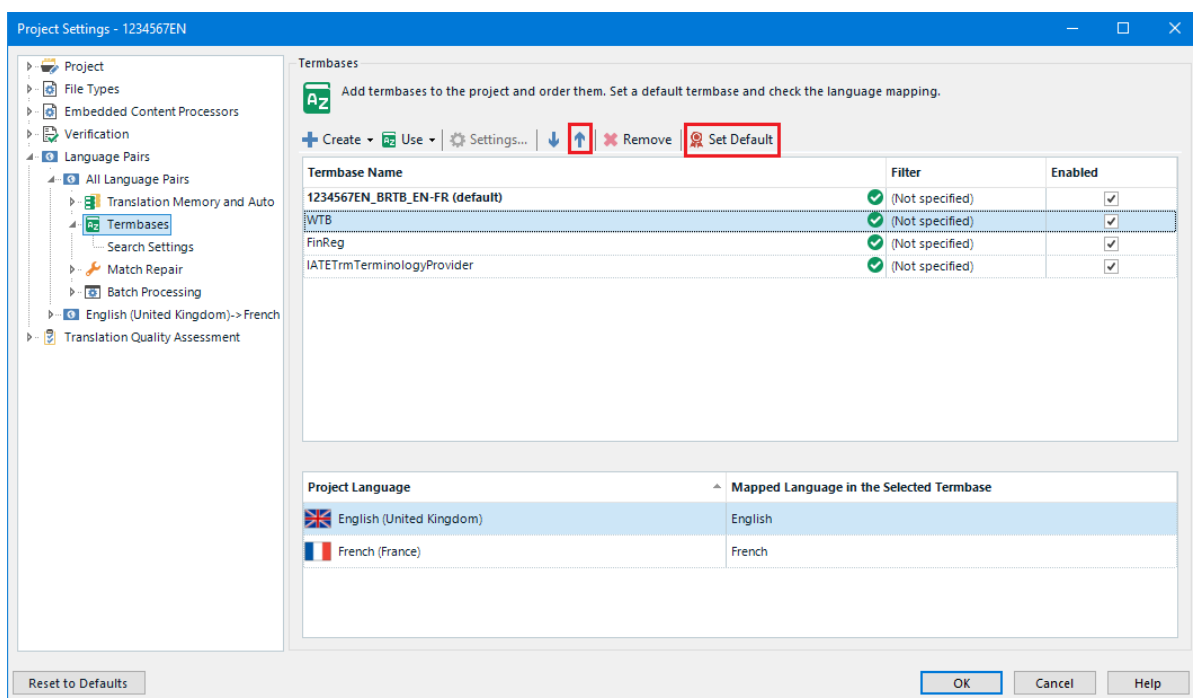
If there is more than one termbase, select all termbases (Ctrl key + click) and click **Open**.



Note that the first termbase attached to the project will be automatically set as **Default**.

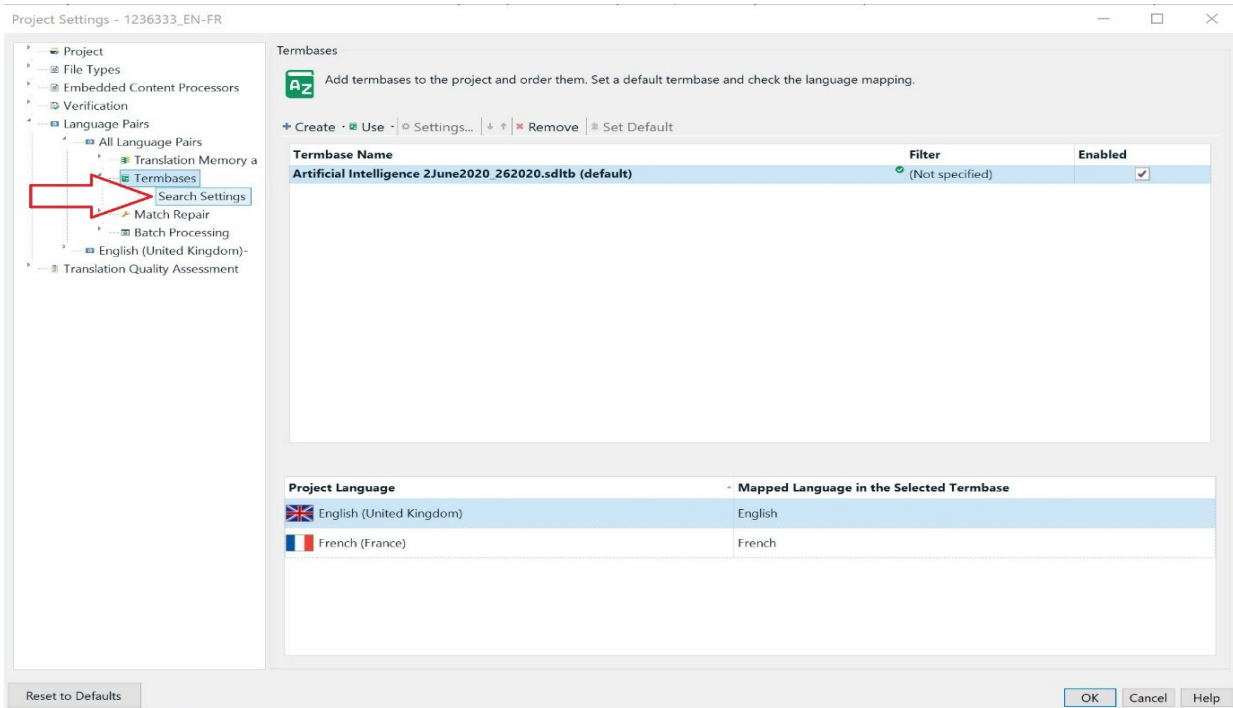
To change it, click the desired termbase, then click **Set Default**.

Alternatively, click the desired termbase and move it to the first position by clicking the **arrow up**.



## TERMBASE INSTRUCTIONS

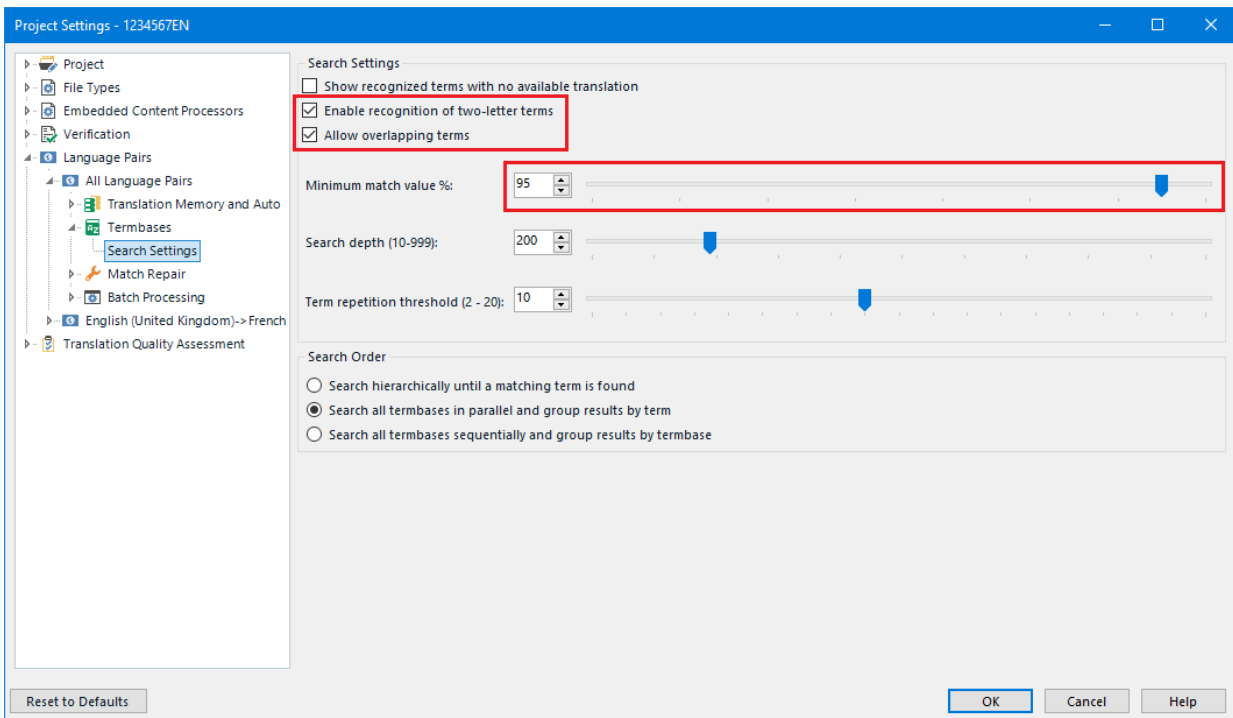
### 4. Go to the **Search Settings** menu and adjust the settings.



These changes have to be made the first time you add a termbase to the project, since they apply only to that specific project:

- enable the recognition of two-letter terms
- allow overlapping terms
- increase the minimum match value to 95%

Click on **OK** to **save the settings** and close the window.



### 5. **Save** the project.

When the translator opens the project, the termbase will be immediately active and ready to be used.